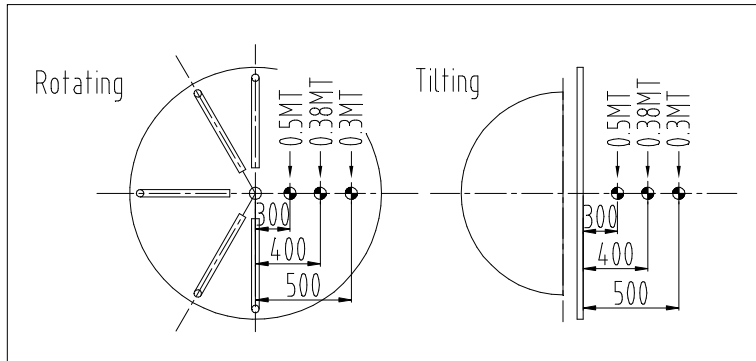
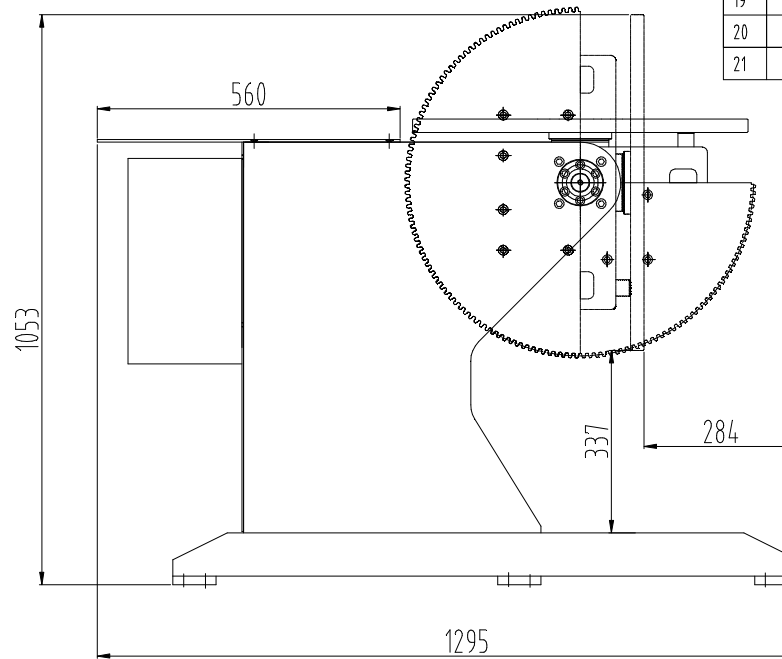
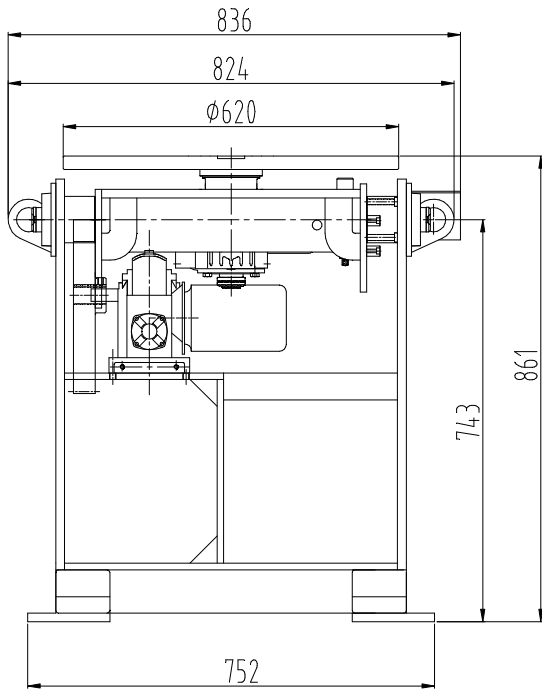


LOAD CHART



specification for positioner

1	Model	PE0.5-0.62C-WD-WH,240V
2	Capacity(Turning)	0.5MT @50mm (Please refer to load chart)
3	Capacity(Tilting)	0.5MT @300mm (Please refer to load chart)
4	Electrical Panel	Yes
5	Rotation Speed	0.2-2rpm At 0-90VDC
6	Tilt Range	0-135 Degree
7	Incoming Supply	240V-1P-50Hz
8	Control Voltage	24V
9	Rotation Drive Control	DC Motor Controller
10	Control Means	Via Double Foot switch c/w 3m cable
11	Rotation Drive Motor	150W DC Motor
12	Forced Cooling Fan Supply	110V
13	Earthing	500A
14	Tilt Speed	135Deg in 50 sec
15	Tilt Drive Motor	500W DC Motor
16	Brake Supply	N.A
17	Surface Preparation	Gritblast to SA2.5
18	Painting	Spray Painting
19	Color	RAL 3003 Red
20	Qty	T.B.A
21	Est Weight	472 KG



ALL DIMENSIONS IN MM, UNLESS OTHERWISE SPECIFIED.

W.A.M.			PROJECT/MODEL : PE0.5-0.62C-WD-WH,240V	
			CLIENT :	
DRAWN	NAME SF	DATE 2020-05-15	DWG. NAME : 500KG Positioner GA	SCALE: N.T.S.
APPROVED			DWG. NO. : PE0.5-0.62C-WD-WH,240V	REVISION: 2
				SHEET NO: 1 OF 1
THE ORIGINAL AND ALL COPIES OF THIS DRAWING TOGETHER WITH THE COPYRIGHT THEREOF ARE THE SOLE PROPERTY OF WELDING AND MACHINERY AUSTRALIA				