



**SENFENG** LEIANG  
LASER

**SENFENG** LEIANG  
LASER

Exclusive distributor in Australia

**ALPHA CNC GROUP PTY LTD**

21/2-4 Picrite Close, Pemulwuy NSW 2145

Phone: 02 9683 6117

Web: [www.alphacnc.com.au](http://www.alphacnc.com.au)

Felix Yan

Mobile: 0420 206 745

Email: [felix\\_yan@alphacnc.com.au](mailto:felix_yan@alphacnc.com.au)

**ALPHA SENFENG Fiber Laser Cutting Machine**

**SF3015H-4000**



## Specifications:



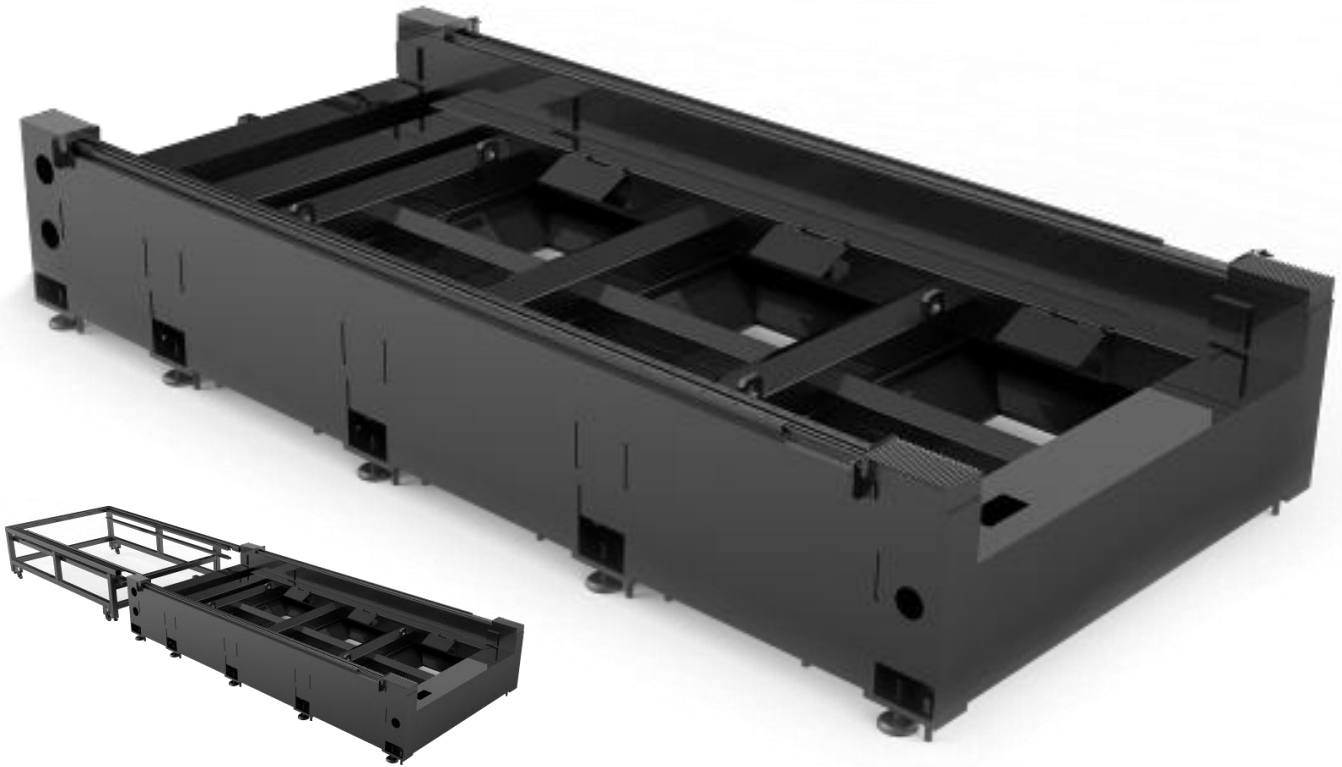
Model	SF3015H-4000
Cutting Table Size	1500mm*3000mm
X-axis Travel	3000mm
Y-axis Travel	1500mm
Z-axis Travel	80mm
Laser Power	4KW
Positioning Accuracy	±0.05mm
Repetitive Accuracy	±0.02mm
Maximum Speed	100m/min
Power	3 Phase 415V/50Hz /100A
Machine Weight	6500KG
Dimension	9500*3160*2000mm
Laser Source	Raycus fiber laser 4KW RFL-C4000
Laser Head	Raytools
CNC Controller	Cypcut - PC based CNC - easy integration into factory network
Cabinet Electrical	SIEMENS/Schneider
Machine Frame	SF3015G
Water Chiller	Specialized for 4KW fiber laser
Dust Exhausting Fan	3KW



## Features:

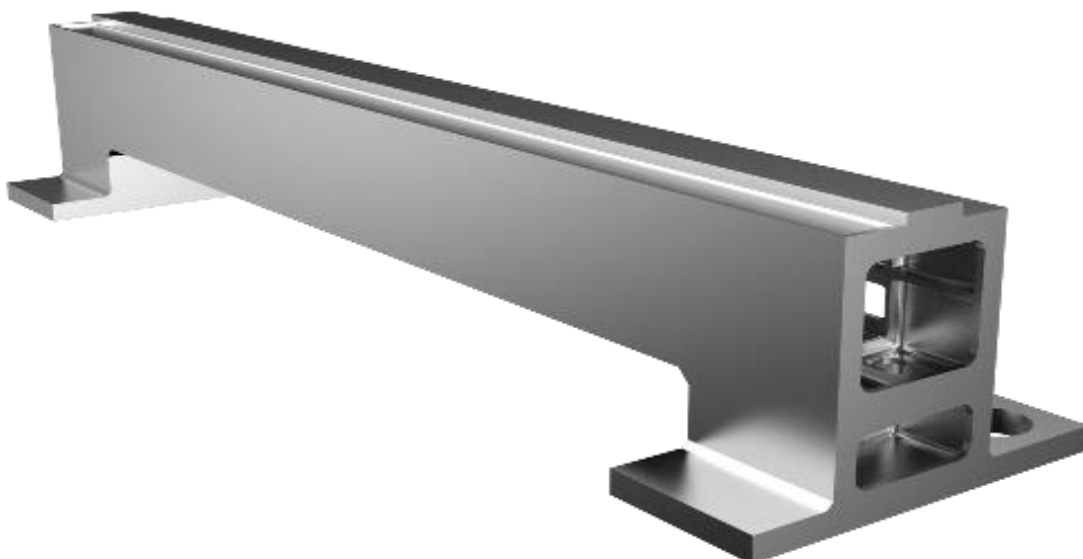
### Pipe Welding Frame

Whole machine is machined by high accuracy CNC gantry machine center, 600° C heat treatment has been done on the machine frame, which gives Alpha SENFENG laser cutting machine a minimum 20 years life without mechanical distortion.



### Cast Aluminium Beam

Light cast aluminium beam has been adopted to guarantee fast and high precision cutting





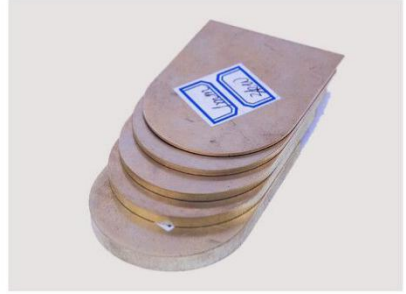
## Application & Capability

### Materials:

Carbon steel - Stainless steel - Aluminum alloy – Brass – Copper - Galvanized Steel - Titanium

### Thickness:

0.5-8mm carbon steel - 0.5-3mm stainless steel - 0.5-2mm aluminium - 0.5-1.5mm brass



### Industries:

Sheet metal manufacturing, Automobile, machinery manufacturing, elevator manufacturing, household appliances, kitchen and sanitary ware, signage, and other machinery manufacturing and processing industries.





## Cutting Parameters 4KW

Material	Thickness (mm)	Cutting speed (m/min)	Cutting Gas
Stainless steel	1	30	N2
	2	12	N2
	3	7	N2
	4	5	N2
	6	2	N2
	8	1.1	N2
	10	0.8	N2
Carbon steel	1	25	N2
	2	12	N2
	3	4.3	O2
	4	3.8	O2
	6	2.1	O2
	8	1.8	O2
	10	1.3	O2
	12	1.1	O2
	14	0.8	O2
	16	0.7	O2
	20	0.5	O2
Brass	1	22	N2
	2	10	N2
	3	6	N2
	5	1.8	N2
Aluminum	1	24	N2
	2	10	N2
	3	6.5	N2
	4	3.5	N2
	5	2	N2
	6	1.5	N2



**SENFENG** LEIMING  
LASER

## SENFENG LEIMING Workshop & Showroom



## USA branch



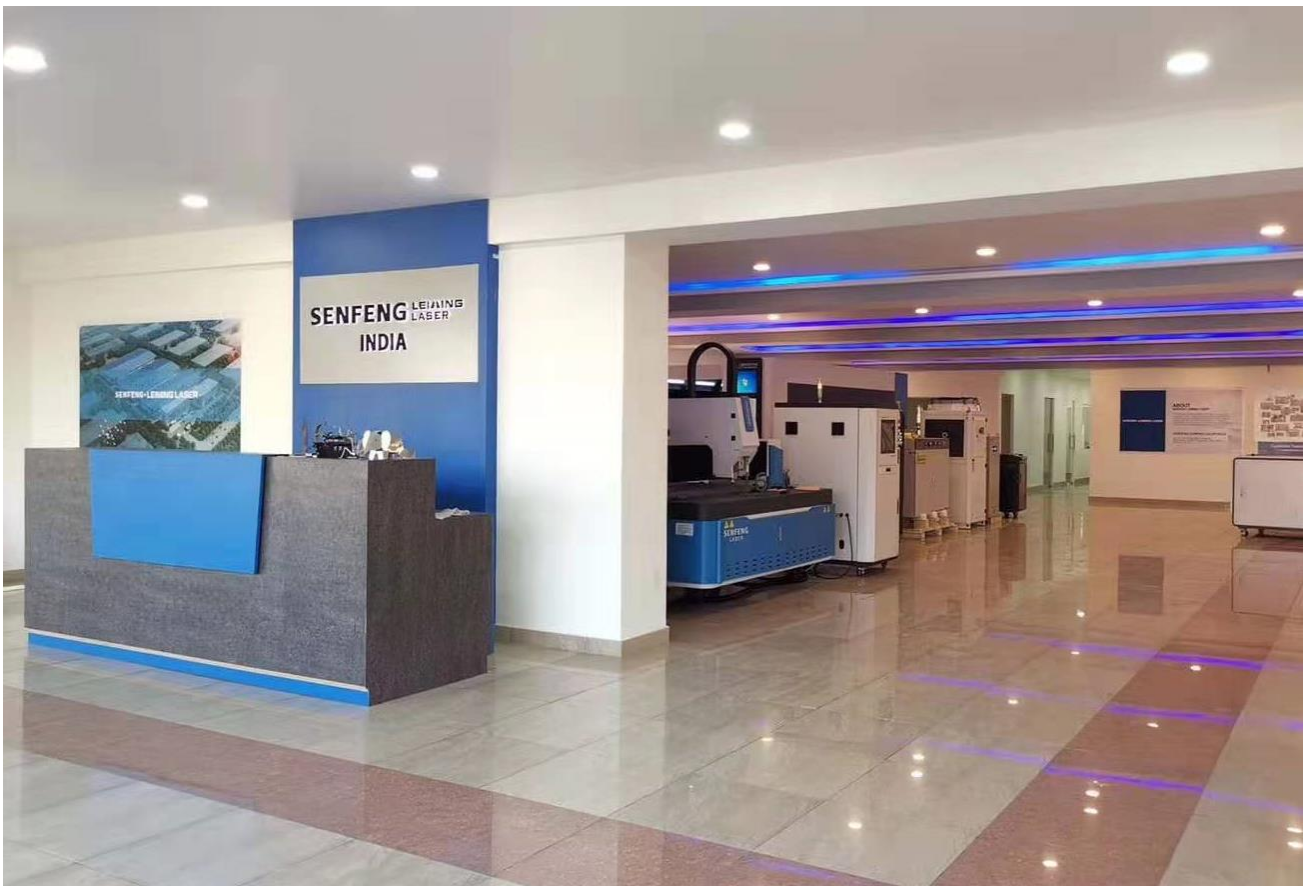


**SENFENG** LEIMING  
LASER

## Germany Branch



## India Branch





## Other Products

### 3D Robot



3D Robot Laser Automation System



3D Laser Cutting and Welding

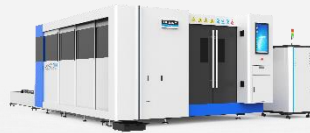


Arm 3D Robot

### Plate and Tube Cutting Machine



Tube Laser Cutter



Dual Table Sheet Fiber Laser Cutter  
With Safety Cover



Sheet Fiber Laser Cutter

### Other Laser Equipment



Automatic Laser Cutting Production Line



Laser Cleaner

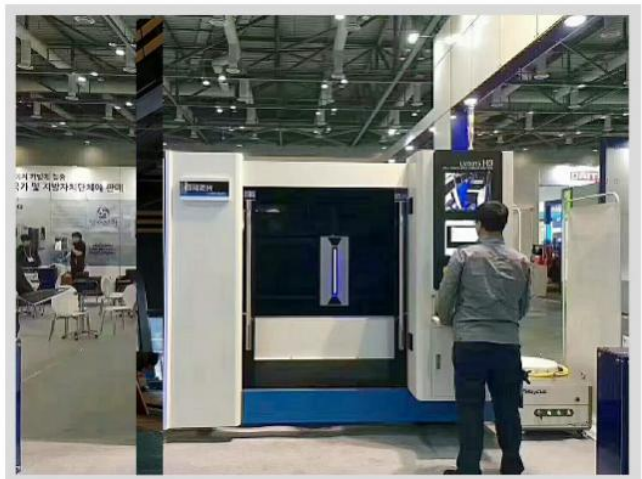
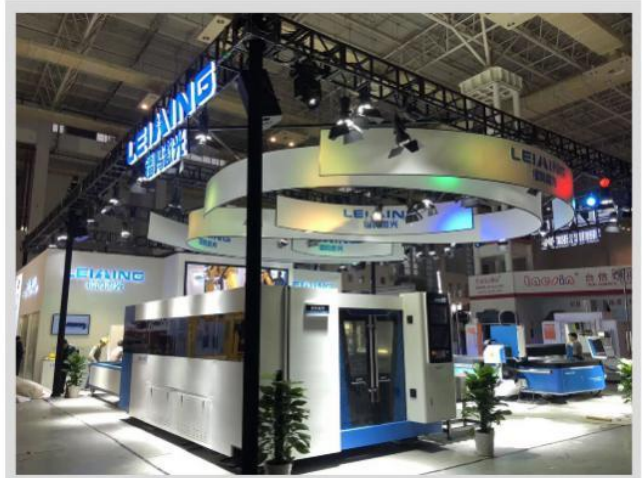
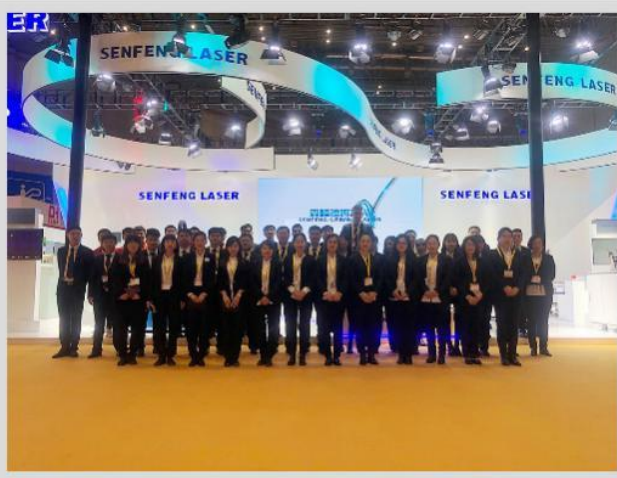


High Precision Laser Cutter



**SENFENG** LEIMING LASER

## Trade shows





**SENFENG** LEIANG  
LASER

# Thanks for your interest

**ALPHA CNC GROUP PTY LTD**

21/2-4 Picrite Close, Pemulwuy NSW 2145

Phone: 02 9683 6117

Web: [www.alphacnc.com.au](http://www.alphacnc.com.au)

Felix Yan

Mobile: 0420 206 745

Email: [felix\\_yan@alphacnc.com.au](mailto:felix_yan@alphacnc.com.au)