

Pinnacle

Since 1976



LV5
LV8

Little Giant

Small but complete, equipped with functions beyond your imagination



3C Industry



Medical Industry



Medical Industry

Linear Guide Ways

LV5 & LV8 can handle a wide range of workpieces for all kinds of fields.

Its compact and sophisticated design saves workshop space and can achieve high reliability, with meticulous design to details.

Very excellent for small precision machining such as consumer electronics products, medical equipment industries, watches industries... and so on.

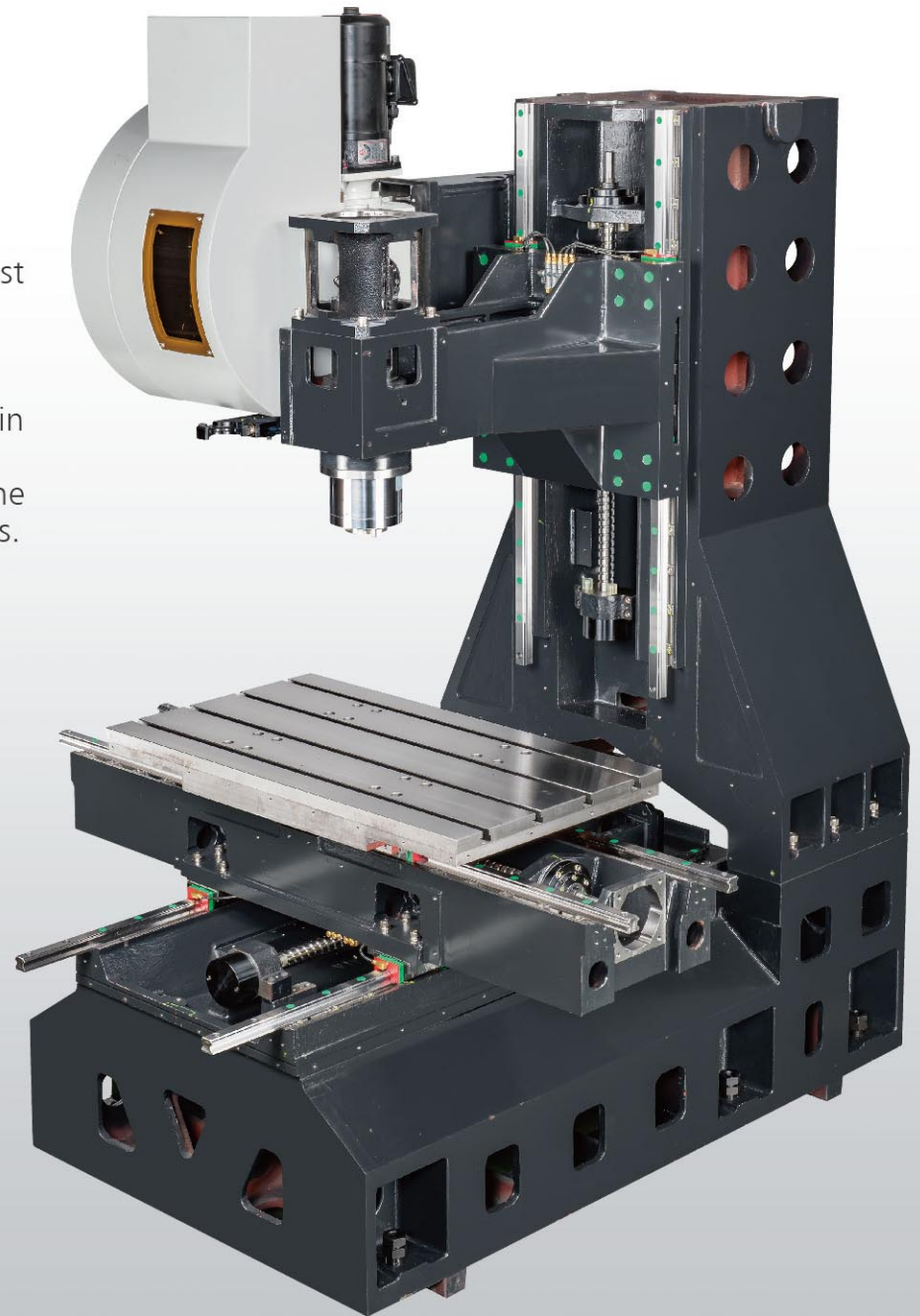
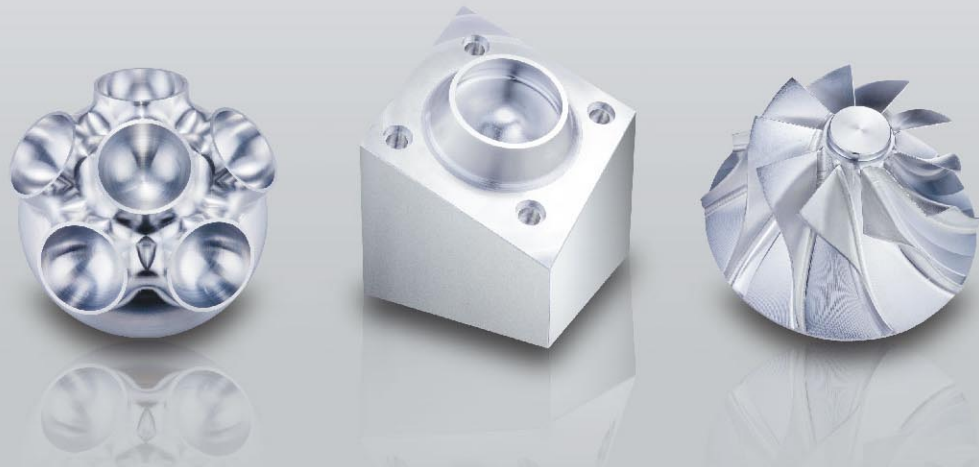
Equipped with a comprehensive portfolio of options for various sectors in the 3-axis and 5-axis area.

Rigid C-frame concept for highest stability and perfect ergonomics

- Meehanite Casting Iron (FC30), tempered to relieve internal stress.
- High-precision manufactured machine components ensure the highest accuracy.
- 30mm width high precision linear guideway.
- 32mm diameter high precision ball screws.
- Highest rigidity and milling performance with rapid traverses of 48 m/min in 3 axes.
- The a compact body and capability of high speed machining, the machine demonstrates excellent performance in machining mass production parts.

LV5 / LV8

- Three axes travel 510(810) x 410(510) x 510 mm.
- Rapid traverse rates 48 / 48 / 48 m/min.
- Spindle speed up to 36,000rpm.
- Spindle motor 3.7 / 5.5 kw.
- Spindle taper ISO30 (ISO40).
- X,Y,Z axis linear guideway.



■ SPECIFICATIONS:

MODEL	LV5	LV8
TABLE		
Table Size (mm)	660 x 410	910 x 510
Travel Ranges(X/Y/Z mm)	510 / 410 / 510	810 / 510 / 510
Max. Table Load (kgs)	200	300
Spindle Nose to Table Surface (mm)	100~610	100~610
T-slot (Width x Distance x Number mm)	14 x 125 x 3	14 x 125 x 4
SPINDLE *LV5 / LV8 both are available		
Tool Shank & Pull Stud	ISO30	ISO40
Spindle Inner Diameter (mm)	Direct-drive Ø45	Direct-drive Ø60
Spindle Center to Column (mm)	462	562
Spindle Speed (rpm) Direct-Drive	12000 (15000)	12000 (15000)
Spindle Speed (rpm) Built-in	24000 (36000/HSK-E40)	—
Draw Bar Force (kgf)	300	600
Main Motor (con/30 min Kw)	3.7 / 5.5	
AXIS SERVOMOTOR		
Rapid Feed Rate (X/Y/Z m/min)	48	
Feed Rate (X/Y/Z mm/min)	20000	
Mitsubishi Power X,Y/Z (kW)	1.5 / 1.5 / 2.0	2.0 / 2.0 / 3.0
Mitsubishi Torque X,Y/Z (Nm)	4.8 / 4.8 / 6.4	6.4 / 6.4 / 9.6
ATC		
ATC Type	Disk	
Tool Selection (Bi-direction)	Arm type	
Tool Storage Capacity (PCs)	20	
Max. Tool Diameter (mm)	Ø 75	
Max. Tool Length (mm)	150	200
Max. Tool Weight (kgs)	4	7
MISCELLANEOUS		
Air Requirement (Kg/cm ²)	6	
Voltage	220	
Power Requirement (KVA)	15	
Coolant Tank Capacity (L)	150	
Machine Weight (Kgs)	2800	3000
Machine Height (mm)	2815	
Floor Space (L x W mm)	1900 x 2250	2200 x 2380

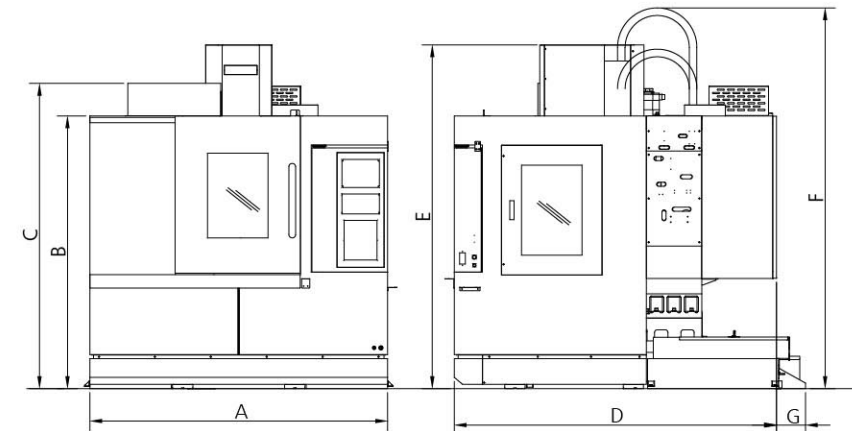
● ALL SPECIFICATIONS AND DESIGNS ARE SUBJECT TO CHANGE WITHOUT NOTICE.

■ Standard Accessories:

Air blast through spindle (nose)	Cooling system	Mitsubishi M80
Air blast for workpiece	Air gun and water spray-gun	Fanuc Oi-MF
Coolant flushing system	MPG handwheel	Heidenhain TNC620
3 axes telescopic covers	Heat exchanger	
Full splash guard	RS-232 Interface	
Automatic lubrication system	Spindle oil cooler	
Working lamp	Adjusting tools and box	
Operation status light	Leveling bolts and pads	
	Operation and programming manual	

■ Control System:

■ Machine Dimensions:



	A	B	C	D	E	F	G
LV5	1900	2015	2255	2250	2540	2815	215
LV8	2200	2015	2255	2380	2540	2815	215



Pinnacle Machine Tool Co., Ltd.

No. 149, Sec. 1, Goufeng Rd., Shengang Dist.,
Taichung City 42942, Taiwan

TEL: 886-4-25252995

FAX: 886-4-25252991

E-mail: info@pinnacle-mc.com

http://www.pinnacle-mc.com

