

TS250RS - Panel Saw

350 x 800mm Cast Iron Table
Ø254mm Saw Blade & Includes 1250mm Sliding Table



Ex GST **Inc GST**
\$2,450.00 **\$2,695.00**

ORDER CODE:	W688
MODEL:	TS250RS
Blade Diameter (mm):	Ø254
Table Size (W x H) (mm):	350 x 800
Table Size With Extensions (mm):	620 x 1210
Max. Depth Of Cut 90° & 45° (mm):	80 / 54
Scribe Blade Diameter (mm):	~
Tilt Arbor To 45°:	Yes
Sliding Table Stroke (mm):	1250
Cross Cut with Flip Over Stop (mm):	1230
Cross Cut with Extension Stop (mm):	1230 - 2280
Rip Capacity (mm):	610
Motor Power (kW / hp):	1.5 / 2
Voltage / Amperage (V / amp):	240 / 10
Floor Space Required (W x D x H) (mm):	3150 x 2600 x 1150
Weight (nett) (kg):	170

WOODFAST



Description

The backbone of any joinery workshop is having a great quality saw bench. The Woodfast TS250RS panel saw is a great example of that and is well known in the industry for its overall sturdiness, accuracy, powerful drive motor, reliable and simple to operate.

The TS250RS panel saw has a hefty cast iron table with heavy gauge steel side extension table and the box section stand. The 254mm saw blade gives a cutting depth of up to 80mm at 90° & 54mm at 45° and adequately powered by a 1.5kW / 2hp - 240V 10-amp induction motor. Another useful feature is that it can cross cut up to 2280mm and incorporates a flip over stop for convenience whilst also allowing up to 610mm ripping capacity.

The professional aluminium box extrusion sliding worktable can smoothly travel up to 1250mm in one motion with minimal friction of effort required. The cast iron table with right side extension support measures an attractive 1210 x 620mm in total. Dust can be removed via a 100mm dust port outlet at rear of machine and the saw guard when connected to a suitable high-volume extraction system.

Features

- 254mm diameter saw blade with 45° tilting arbor
- 80mm @ 90°, 54mm @ 45° depth of cut
- 1.5kW / 2hp 240V motor
- Ideal for the serious home user who wants to accurately process solid wood but also has the need to rip larger sheets
- Professional aluminium sliding work table with 1250mm travel ensures smooth & minimal friction travel
- 2280mm cross cut with adjustable flip over stop
- 1200 x 238mm sliding table size
- 350 x 800mm cast iron table (with steel extensions 620 x 1210mm)
- Rise and fall spindle
- 610mm ripping capacity
- 30mm dust extraction outlet on blade guard as well as a 100mm chute from the enclosed stand
- Includes heavy duty aluminium extrusion rip fence with fine adjustment

Specific Features



Right View



Heavy Duty Rip Fence Guide



Mitre Guide Fence with Flip Over Stop



Degree Scale On Sliding Fence



Blade



Switch



Blade Adjustment Handle



Push Stick



Blade Rise And Fall Handle



Dust Chute



Adjustment Material Stop



Aluminium Extrusion Box Design Slide

Product Brochure For W688

sales@machineryhouse.com.au
www.machineryhouse.com.au

Recommended Accessories

W952

Wood Band Saw



W394

Dust Collector



W329

Dust Collector



W344

Wood Dust Accessory Kit



W334

Dust Hose Reducer



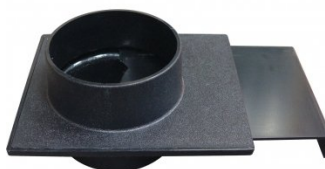
W333

Dust Hose Reducer



W335

Dust Hose Shut Off Valve



W336

Dust Hose Elbow



Product Brochure For W688

W337

Dust Hose Y Adaptor



W338

Dust Hose Universal Dust Hood



W339

Dust Hose Floor Sweeper Attachment



W340

Dust Hose Clamp



W341

Dust Hose Clamp



W398

PVC Dust Hose (Sold Per Metre)



W398A

PVC Dust Hose (Sold Per Metre)



W343

Roller Stand



W343A

Roller Stand



W343A

Roller Stand



M977

Digital Bevel Box

